

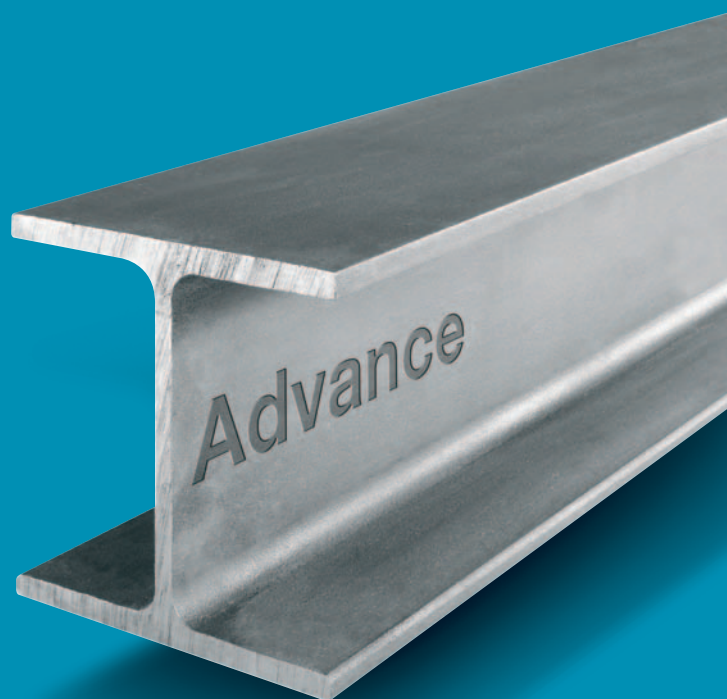
Corus Long Products

---

# Advance<sup>®</sup> sections price list 5

---

Effective 30 May 2010





# Index

## Advance® sections price list 5, effective from 30 May 2010

This price list replaces the 31st edition of 30 March 2008

<b>1 Basis specification and quality extras</b>	
1.1 Quality	Page 4
Specification extras:	Page 4
BS EN 10025	Page 4
1.2 Other qualities	Page 4
Offshore	Page 4
Shipbuilding qualities	Page 4
<b>2 Basis prices</b>	Page 5
2.1 Universal beams and columns	Page 6,7,8
2.2 Universal bearing piles	Page 9
2.3 Asymmetric Slimflor® beams (ASB)	Page 9
2.4 Parallel flange channels	Page 10
2.5 Angles – equal and unequal	Page 10
<b>3 Other extras to basis prices</b>	
3.1 Quantity	Page 11
3.2 Length	Page 11
3.3 Finishing/marketing	Page 12
Surface quality	Page 12
Stamping	Page 12
Straightness/squareness	Page 12
Marking	Page 12
3.4 Testing and inspection	Page 12
Inspection authorities' fees	Page 12
Surface inspection	Page 12
Independent inspection	Page 12
Ultrasonic testing	Page 13
Impact testing	Page 13
Mechanical testing	Page 13
Test certificates	Page 13
Product analysis	Page 13
Quality assurance	Page 13
<b>4 Customer collection</b>	Page 14
<b>5 Certificates of Approval</b>	Page 14
<b>6 Terms and conditions</b>	Page 14

# 1 Basis specification and quality extras

Note: In all references to specifications, Corus applies the most up-to-date version relevant at the time of order placement.

## 1.1 Quality

### Basis specification and quality extras

#### Specification extras

EN10025-2	Advance® sections grade	£ per tonne
*S275JR	*AdvanceS275JR	Basis
S275J0	AdvanceS275J0	25.00
S275J2	AdvanceS275J2	30.00
*S355JR	*AdvanceS355JR	30.00
S355J0	AdvanceS355J0	40.00
S355J2	AdvanceS355J2	85.00
S355K2	AdvanceS355K2	110.00

\*Verification of the specified impact value will not be carried out (see impact testing on page 13)

EN10025-4		
S355M		POA
S355ML	section sizes upto 634kg/m	POA
S420M	section sizes upto 634kg/m	POA
S420ML	section sizes upto 634kg/m	POA
S460M	section sizes upto 634kg/m	POA
S460ML	section sizes upto 634kg/m	POA

Note

Old specifications e.g. BS 4360 may be supplied, but this is subject to referral.

## 1.2 Other qualities

### Offshore

EN10225	Minimum yield strength	Charpy V-notch temp	Extra £ per tonne
S355G1	355 MPa	-20°C	85.00
S355G4	355 MPa	-20°C	90.00
S355G4+M	355 MPa	-20°C	90.00
S355G11	355 MPa	-40°C	125.00
S355G11+M	355 MPa	-40°C	125.00
S355G12	355 MPa	-40°C	135.00
S355G12+M	355 MPa	-40°C	135.00

Notes

1. The above basis price includes all mandatory quality extras.
2. The price extra includes marking to the standard.
3. Where customers require additional marking - price on application.
4. Where the customer specifies options within the standard, these will be subject to the manufacturer's acceptance, and price extras will be applied as appropriate.
5. Corus offers ultrasonic testing of all sections, as described on page 13.
6. Any third party inspectorates and/or ultrasonic testing and/or through thickness testing – price on application

### Shipbuilding

	Extra £ per tonne
Lloyd's Register Grade A	Basis
Other qualities	By arrangement

## 2 Basis prices

The basis prices on page 6 to 10 apply to the following:

### **Weight**

The standard weights are derived from the cross sectional area on the basis of 0.785 kg per cm<sup>2</sup> per metre length. The maximum weight of an individual bar is 15 tonnes.

The weight to be charged will be the calculated weight based on the weight per metre (1 decimal point) as specified in BS4-1, EN10056-2 and the current Corus *Advance* sections brochure as appropriate, multiplied by the ordered length.

### **Note**

The third element of the section designation is that detailed within the appropriate standard and should not be used to calculate or verify invoiced weights.

### **Rolling tolerances**

All *Advance* sections are rolled to the tolerances in EN10279, EN10034, EN10056-2, BS4-1 and the current Corus *Advance* sections brochure as appropriate.

### **Quality**

EN10025-2 Grade S275 JR, with the exception of Asymmetric Slimflor Beams (ASB) (Page 9).

### **Quantity**

Each order or specification for a quantity of 10 tonnes and over, of one quality, one serial size of section and one thickness for one delivery to one destination.

### **Tests**

Material will be tested in accordance with the relevant standard. One copy of the test certificate will be routinely supplied to the customer by Corus.

### **Length**

Basis prices apply to lengths in the range 9,000 to 18,500mm in 100mm increments, except as indicated in section 3.2 on page 11. These lengths are offered to the tolerances as specified in the relevant product standards: BS4-1; EN10034; EN 10056-2, EN10279 and the current Corus *Advance* sections brochure as appropriate.

### **Labelling and marking**

The brand identifier *Advance* is rolled into the web of all sections.

## 2 Basis prices continued

### 2.1 Universal Beams (UKB) and Columns (UKC)

#### Category A sizes

Section designation			UKB
Size (mm)		kg per metre	£ per tonne
127 x 76	x 13	13.0	830.00
152 x 89	x 16	16.0	830.00
178 x 102	x 19	19.0	820.00
203 x 102	x 23	23.1	820.00
203 x 133	x 30	30.0	820.00
	x 25	25.1	820.00
254 x 146	x 43	43.0	820.00
	x 37	37.0	820.00
	x 31	31.1	820.00

Section designation			UKC
Size (mm)		kg per metre	£ per tonne
➤ 152 x 152	x 51	51.2	820.00
➤	x 44	44.0	820.00
	x 37	37.0	820.00
	x 30	30.0	820.00
	x 23	23.0	820.00

➤ New section sizes.

# UKB & UKC

## 2.1 Universal Beams (UKB) and Columns (UKC)

### Category B sizes

Section designation				UKB			
Size (mm)		kg per metre	£ per tonne	Section designation		UKB	
254 x 102	x 28	28.3	830.00	457 x 191	x 161	161.4	830.00
	x 25	25.2	830.00		x 133	133.3	830.00
	x 22	22.0	830.00		x 106	105.8	830.00
305 x 102	x 33	32.8	830.00	x 98	98.3	830.00	
	x 28	28.2	830.00	x 89	89.3	830.00	
	x 25	24.8	830.00	x 82	82.0	830.00	
305 x 127	x 48	48.1	830.00	x 74	74.3	830.00	
	x 42	41.9	830.00	x 67	67.1	830.00	
	x 37	37.0	830.00	533 x 165	x 85	84.8	840.00
305 x 165	x 54	54.0	830.00	x 74	74.7	840.00	
	x 46	46.1	830.00	x 66	65.7	840.00	
	x 40	40.3	830.00	533 x 210	x 138	138.3	840.00
356 x 127	x 39	39.1	840.00	x 122	122.0	840.00	
	x 33	33.1	840.00	x 109	109.0	840.00	
356 x 171	x 67	67.1	840.00	x 101	101.0	840.00	
	x 57	57.0	840.00	x 92	92.1	840.00	
	x 51	51.0	840.00	x 82	82.2	840.00	
	x 45	45.0	840.00	533 x 312	x 272	273.3	840.00
406 x 140	x 53	53.3	840.00	x 219	218.8	840.00	
	x 46	46.0	840.00	x 182	181.5	840.00	
	x 39	39.0	840.00	x 150	150.6	840.00	
406 x 178	x 85	85.3	840.00	610 x 229	x 140	139.9	840.00
	x 74	74.2	840.00	x 125	125.1	840.00	
	x 67	67.1	840.00	x 113	113.0	840.00	
	x 60	60.1	840.00	x 101	101.2	840.00	
	x 54	54.1	840.00	610 x 178	x 100	100.3	840.00
457 x 152	x 82	82.1	840.00	x 92	92.2	840.00	
	x 74	74.2	840.00	x 82	81.8	840.00	
	x 67	67.2	840.00				
	x 60	59.8	840.00				
x 52	52.3	840.00					

Section designation				UKC			
Size (mm)		kg per metre	£ per tonne	Section designation		UKC	
203 x 203	x 127	127.5	830.00	x 107	107.1	830.00	
	x 113	113.5	830.00	x 89	88.9	830.00	
	x 100	99.6	830.00	x 73	73.1	830.00	
	x 86	86.1	830.00	305 x 305	x 283	282.9	840.00
	x 71	71.0	830.00	x 240	240.0	840.00	
	x 60	60.0	830.00	x 198	198.1	840.00	
	x 52	52.0	830.00	x 158	158.1	840.00	
	x 46	46.1	830.00	x 137	136.9	840.00	
254 x 254	x 167	167.1	830.00	x 118	117.9	840.00	
	x 132	132.0	830.00	x 97	96.9	840.00	

► New section sizes.

# UKB & UKC

## 2 Basis prices continued

### 2.1 Universal Beams (UKB) and Columns (UKC)

#### Category C sizes

Section designation		UKB	
Size (mm)		kg per metre	£ per tonne
610 x 305	x 238	238.1	860.00
	x 179	179.0	860.00
	x 149	149.1	860.00
686 x 254	x 170	170.2	870.00
	x 152	152.4	870.00
	x 140	140.1	870.00
762 x 267	x 125	125.2	870.00
	x 197	196.8	870.00
	x 173	173.0	870.00
838 x 292	x 147	146.9	870.00
	x 134	133.9	870.00
	x 226	226.5	870.00
914 x 305	x 194	193.8	870.00
	x 176	175.9	870.00
	x 289	289.1	880.00
914 x 419	x 253	253.4	880.00
	x 224	224.2	880.00
	x 201	200.9	880.00
	x 388	388.0	880.00
	x 343	343.3	880.00

Section designation		UKB	
Size (mm)		kg per metre	£ per tonne
1016 x 305	x 487	487.0	1350.00
	x 438	438.0	1350.00
	x 393	393.0	1350.00
	x 349	349.0	1350.00
	x 314	314.0	1350.00
	x 272	272.0	1350.00
	x 249	249.0	1350.00
	x 222	222.0	1350.00

Section designation		UKC	
Size (mm)		kg per metre	£ per tonne
356 x 368	x 202	201.9	885.00
	x 177	177.0	885.00
	x 153	152.9	885.00
356 x 406	x 129	129.0	885.00
	x 634	633.9	895.00
	x 551	551.0	895.00
	x 467	467.0	895.00
	x 393	393.0	885.00
	x 340	339.9	885.00
	x 287	287.1	885.00
	x 235	235.1	885.00

#### Universal Beams (UKB) and Columns (UKC)

		Extra £ per tonne
Non-standard sizes*		POA

\*Those that are obtained by raising the rolls of the parent BS4-1 size.

N.B. There may be a minimum requirement associated with non-standard sizes

# UKBP & ASB

## 2.2 Universal Bearing Piles (UKBP)

Section designation			UKBP
Size (mm)		kg per metre	£ per tonne
203 x 203	x 54	53.9	840.00
	x 45	44.9	840.00
254 x 254	x 85	85.1	840.00
	x 71	71.0	840.00
	x 63	63.0	840.00
305 x 305	x 223	222.9	840.00
	x 186	186.0	840.00
	x 149	149.1	840.00
	x 126	126.1	840.00
	x 110	110.0	840.00
	x 95	94.9	840.00
	x 88	88.0	840.00
356 x 368	x 79	78.9	840.00
	x 174	173.9	885.00
	x 152	152.0	885.00
	x 133	133.0	885.00
	x 109	108.9	885.00

Individual requirements for Universal Bearing Piles (UKBP) should be discussed with Corus prior to order placement. UKBP are rolled at the same frequency as Universal Columns (UKC) of the same nominal dimension.

## 2.3 Asymmetric Slimflor® Beams (ASB)

A family of rolled sections with wide bottom flanges intended for use in Slimdek® construction. These beams have a surface embossment on the top flange to develop action with the concrete encasement.

Section designation			S355J0
Size (mm)		kg per metre	£ per tonne
280 ASB	74	73.6	1050.00
280 ASB	100	100.3	1050.00
280 ASB	105	104.7	1050.00
280 ASB	124	123.9	1050.00
280 ASB	136	136.4	1050.00
300 ASB	153	152.8	1050.00
300 ASB	155	155.4	1050.00
300 ASB	185	184.6	1050.00
300 ASB	196	195.5	1050.00
300 ASB	237	237.1	1050.00
300 ASB	249	249.2	1050.00

# UKPFC & UKA

## 2 Basis prices continued

### 2.4 Parallel Flange Channels (UKPFC)

#### Category A sizes

Section designation Size (mm)	kg per metre	UKPFC £ per tonne
125 x 65 x 15	14.8	805.00
150 x 75 x 18	17.9	805.00
180 x 75 x 20	20.3	805.00
200 x 75 x 23	23.4	805.00

#### Category B sizes

Section designation Size (mm)	kg per metre	UKPFC £ per tonne
150 x 90 x 24	23.9	840.00
180 x 90 x 26	26.1	840.00
200 x 90 x 30	29.7	840.00
230 x 75 x 26	25.7	910.00
230 x 90 x 32	32.2	910.00
260 x 75 x 28	27.6	910.00
260 x 90 x 35	34.8	910.00
300 x 90 x 41	41.4	910.00
300 x 100 x 46	45.5	910.00
380 x 100 x 54	54.0	940.00
430 x 100 x 64	64.4	1070.00

#### Parallel Flange Channels (UKPFC)

	Extra £ per tonne
Non-standard sizes*	POA

\*Those that are obtained by raising the rolls of the parent BS4-1 size.

N.B. There may be a minimum requirement associated with non-standard sizes.

### 2.5 Equal and Unequal Angles (UKA)

#### Category A sizes

Size (mm)	Thickness (mm)	UKA £ per tonne
100 x 100	8, 10, 12, 15	790.00
125 x 75	8, 10, 12	790.00
120 x 120	8, 10, 12, 15	790.00

#### Category B sizes

Size (mm)	Thickness (mm)	UKA £ per tonne
150 x 75	10, 12, 15	800.00
150 x 150	10, 12, 15, 18	800.00
150 x 90	10, 12, 15	800.00
200 x 200	16, 18, 20, 24	880.00
200 x 100	10, 12, 15	880.00
200 x 150	12, 15, 18	1280.00

#### Angles

	Extra £ per tonne
Non-standard sizes*	POA

\*Those that are obtained by raising the rolls of the parent EN10056-1 size.

N.B. There may be a minimum requirement associated with non-standard sizes.

## 3 Other extras to basis prices

### 3.1 Quantity

Each order or specification of one quality, one serial size of section and one thickness for one delivery to one destination.

Weight	Extra £ per tonne
10 tonnes and over	Basis
Under 10 tonnes to 5 tonnes	10.00
Under 5 tonnes to 2 tonnes	25.00
Under 2 tonnes (when available – see note)	50.00

Orders under 2 tonnes are not normally accepted. Basis price will also apply to orders accepted for 20 tonnes or over of one quality and one serial size of section in more than one thickness for one delivery to one destination.

Note

There are certain mill restrictions with regard to quantities for certain sizes and lengths. Details are available on request.

### 3.2 Length

#### Universal Beams, Columns and Bearing Piles (UKB, UKC and UKBP)

Lengths	£ per tonne
6,000mm to under 9,000mm in 100mm increments	15.00
9,000mm to 18,500mm in 100mm increments	Basis
Over 18,500mm to 24,000mm in 100mm increments	POA
Lengths over 24,000mm are subject to referral	POA

#### Channels, Asymmetric Slimflor® Beams and Angles (UKPFC, ASB and UKA)

Lengths	£ per tonne
6,000mm to 18,500mm in 100mm increments	Basis
Over 18,500mm to 24,000mm in 100mm increments	POA
Lengths over 24,000mm are subject to referral	POA

Notes

1. Orders are not normally accepted for length increments of less than 100mm except when cold sawing is specified and agreed.
2. Customers should be aware that there are certain production conditions which may limit the availability of products over 24,000mm and individual orders should be discussed with Corus.

## 3 Other extras to basis prices continued

### 3.3 Finishing/marketing

#### Surface quality

	Extra £ per tonne
Specification of class D in respect of EN 10163-3	POA
Where specified by the purchaser, other non-standard surface quality requirements may be provided	POA

#### Stamping

	Extra £ per tonne
Stamping will only be carried out when specified as a mandatory requirement of the specification	POA
Where requested by the customer, the stamping of all sections can be offered by Corus	POA

#### Straightness/squareness

For specified applications, tighter tolerances of Universal Beams (UKB), Columns (UKC) and Bearing Piles (UKBP) can be provided such that squareness is controlled to half tolerances to a minimum of 3mm and straightness is offered at half tolerances.

	Extra £ per tonne
- Straightness	POA
- Squareness	POA

Note

Customers are advised to specify this requirement at the time of enquiry and order placement.

#### Marking

	Extra £ per tonne
Corus barcoded label	Basis
Label supplemented with colour coding	POA

Note

Other specific marking not covered by the above information can be provided by Corus. Price on application.

### 3.4 Testing and Inspection

#### Inspection authorities' fees

Inspection authorities' fees, including Lloyd's Register and other shipping survey societies, will be charged in full to the buyer.

#### Surface inspection

*Advance* sections comply with the normal surface condition requirements specified in the appropriate product standard and manufactured in accordance with the appropriate quality control procedures.

	Extra £ per tonne
Special requirements may be accommodated by agreement	POA

Note

See surface quality section 3.3 above.

#### Independent inspection

	Extra £ per tonne
When surface inspection and/or inspection of section dimensional/shape tolerance and section identification marks is to be undertaken in the presence of the purchaser or his representative	POA

### Ultrasonic testing

	Extra £ per tonne
Testing to EN 10306 and EU 186-87 can be offered*	POA
Ultrasonic testing of all sections is provided by Corus	POA
Witnessing**	POA

#### Notes

1. Any special requirements regarding limits on internal defects should be agreed at the time of the original order.
2. Tests not specified and agreed at the time of ordering will not be considered part of the contract.
3. \*Edge testing as defined in BS 5996, is not available.
4. \*\*Ultrasonic testing undertaken in the presence of the purchaser or outside inspection authority.

### Impact testing

	Extra £ per tonne
Where customers exercise option 3 of EN 10025-2 for impact testing, the request must be made at the time of order placement	POA
Other impact testing	POA

### Mechanical testing

	Extra £ per tonne
Additional mechanical testing available	POA

### Test certificates

	Extra £ per tonne
Test certificates supplied in accordance with EN 10204 Type 3.1	Basis
Test certificates supplied to other EN 10204 Types	POA

### Product analysis

	Extra £ per tonne
Product analysis	POA

#### Note

A minimum charge will apply for each order or specification of one quality, one serial size of section and one thickness for one delivery.

### Quality assurance

Corus Long Products has been approved by Lloyd's Register Quality Assurance to EN ISO 9001, including the production and supply of sectional products and extra finishing operations. Additionally Lloyd's Register has approved Corus' Section Mills Quality Management Systems and Factory Production Controls in accordance with the Construction Products Directive. As appropriate, Advance sections will be supplied with a test certificate showing the CE mark.

	Extra £ per tonne
Where the customer requires sections manufacture to be in accordance with an agreed quality plan involving multiple inter-stage inspection, document reviews or other procedures, inspection charges will reflect the degree of inspection required by the quality plan and the number of inspection authorities involved.	POA

## 4 Customer collection

### Customer collection

	Extra £ per tonne
Collection by the customer with his own transport	POA

#### Note

The following conditions will apply to customer collecting material from works:

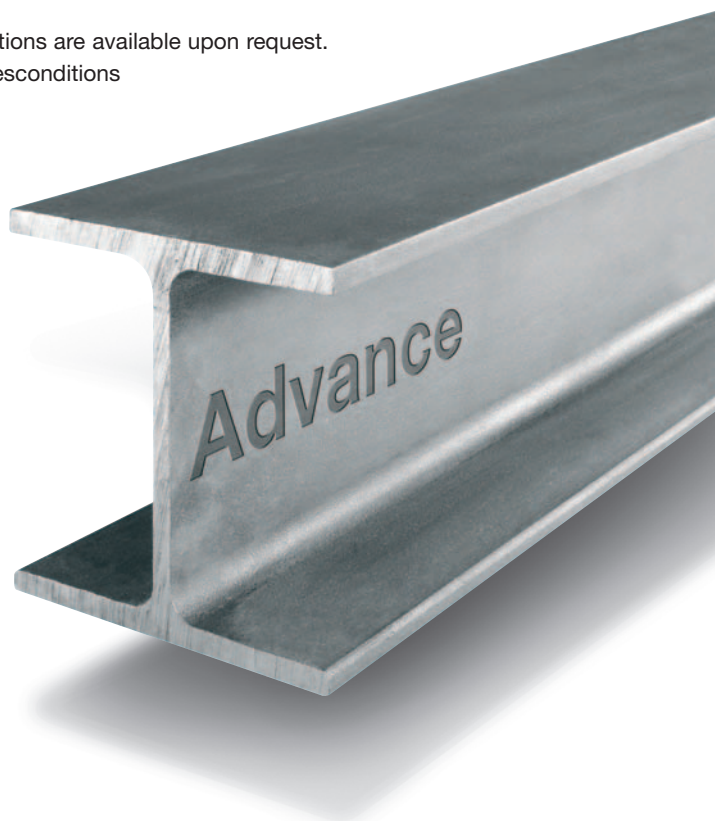
1. Customers will be advised when consignments are available for collection. If the material is not collected within the specified time an additional charge for warehousing will be added to the invoice.
2. Corus will not normally provide any indication of waiting time for customers' vehicles loading at works and shall be under no obligation to do so.
3. Vehicles collecting from Corus works must be governed by Corus health and safety standards.

## 5 Certificates of Approval

*Advance* sections are fully compliant with the requirements of the Construction Products Directive (CPD 89/106/EEC). Our Declaration of Conformity and Notified Body Approval Certificates can be viewed on-line at [www.corusconstructionandindustrial.com](http://www.corusconstructionandindustrial.com)

## 6 Terms & Conditions of sale

Standard terms and conditions are available upon request.  
[www.corusgroup.com/salesconditions](http://www.corusgroup.com/salesconditions)





---

**www.corusgroup.com**

---

**Trademarks of Corus**

*Advance, Slimdek, Slimflor, UKA, UKB, UKBP, UKC and UKPFC* are trademarks of Corus

Care has been taken to ensure that this information is accurate, but Tata Steel Europe Ltd, including its subsidiaries, does not accept responsibility or liability for errors or information which is found to be misleading.

Copyright 2010  
Corus

References to British Standards are in respect of the current versions and extracts are quoted by permission of the British Standards Institute from whom copies of the full standards may be obtained.

**Main Commercial Office**

Corus Long Products  
PO Box 1  
Brigg Road  
Scunthorpe  
North Lincolnshire  
DN16 1BP  
T +44(0) 1724 404040  
F +44(0) 1724 405600  
email: [corusections@corusgroup.com](mailto:corusections@corusgroup.com)

**Scotland**

Corus Long Products  
PO Box 30  
Motherwell  
Lanarkshire  
ML1 1AA  
T +44(0) 1698 265033  
F +44(0) 1698 232888